



IRCC11

Infrastructure at the IHO Secretariat

IHO Secretariat





Website Content Alert Service

Website Content Alert Service

Upcoming Events/Événements à venir

Upcoming Public Events / Événements publics à venir

IHO Meetings & Events / Réunions & Événements OHI

World Bathymetry

The IHO DCDB

IHO GIS

Download World Bathymetric Data

Contribute ENC Data to GEBCO

IHO Disclaimer, Privacy and Copyright Notice

IHO Disclaimer, Privacy and Copyright Notice

You are here: Home > IHO GIS

GIS / SIG

Search

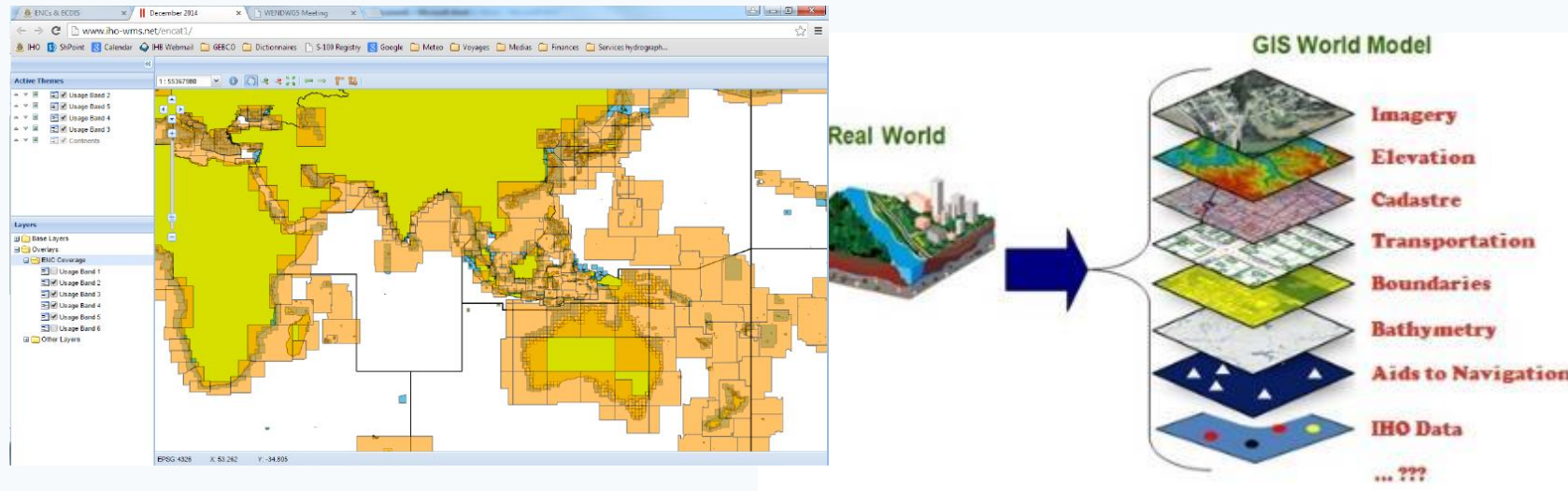
Search Go

IHO Geographic Information System	Système d'information géographique de l'OHI
Country Information System	Système d'information sur les pays
• IHO Membership	• Composition de l'OHI
• MSDI National Geoportals	• Geoportails MSDI nationaux
Regional Information Systems	Systèmes d'information régionaux
• Antarctic GIS	• SIG Antarctique
Chart Information Systems	Systèmes d'information sur les cartes
• International Chart GIS	• SIG des cartes Internationales
• IHO ENC Catalogue	• Catalogue des ENC de l'OHI
• Undersea Feature Name Gazetteer	• Index des noms des formes du relief sous-marin
Capacity Building Information	Information sur le renforcement des capacités
• CHART Project	• Projet CHART
World Bathymetry Information	Bathymétrie mondiale
• IHO Data Centre for Digital Bathymetry (DCDB)	• Centre de données de l'OHI pour la bathymétrie numérique (DCDB)
• Contribute ENC data to GEBCO	• Contribuer des données ENC pour la GEBCO

Sir

ns

IHO GIS and Databases



- avoid duplication of data and inputs
- enable data visualisation
- enable data fusion and analysis
- provide GIS data layers for RHCs and Member States
- enable publication and website updates (P-5, C-55, etc.)



IHO CIS Databases

- Yearbook, C-55,
- Upgrade of the database to include additional information including:
 - the date of signature of the SOLAS Convention, when applicable,
 - the existence of a Nominated Hydrographic Authority,
 - the existence of an MSI Capability,
 - hydrographic capability,
 - CATZOCs,
 - the identification of the Primary Charting Authority,
 - Trainees, trainers and consultants (ongoing) - CBMS





IHO Country Information System

Country / Area index

select the country

- Download P5 from IHO website
- Download Member State map
- Download CSV data set
- Download PDF data set
- Display change logs
- Register information
- Publish files
- Tutorial

Administrator

Country map C55 Charting C55 Surveying C55 GMDSS C55 Warnings CATZOC Boundary RHC Other GISs Reset Token

Member State MSI Capability IBSC Program Geoprtal C-55 Update Primary CA1 Primary CA2 Nominated HA

Set center Lat Lon Level



Charts displaying maritime boundaries are for INTERNAL IHO SECRETARIAT USE ONLY





IHO Country Information System

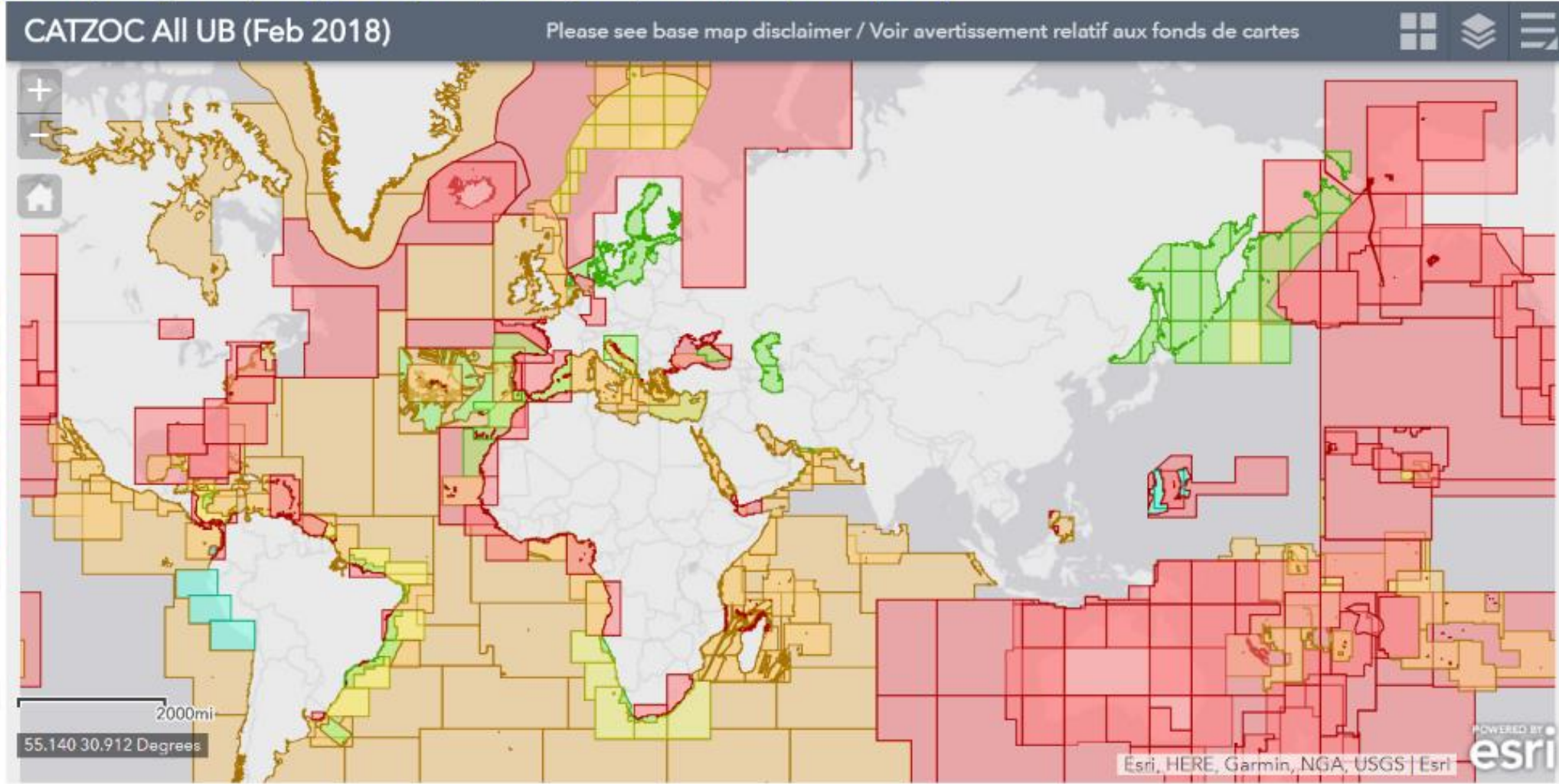
Country / Area index
select the country

- Download P5 from IHO website
- Download Member State map
- Download CSV data set
- Download PDF data set
- Display change logs
- Register information
- Publish files
- Tutorial

Administrator

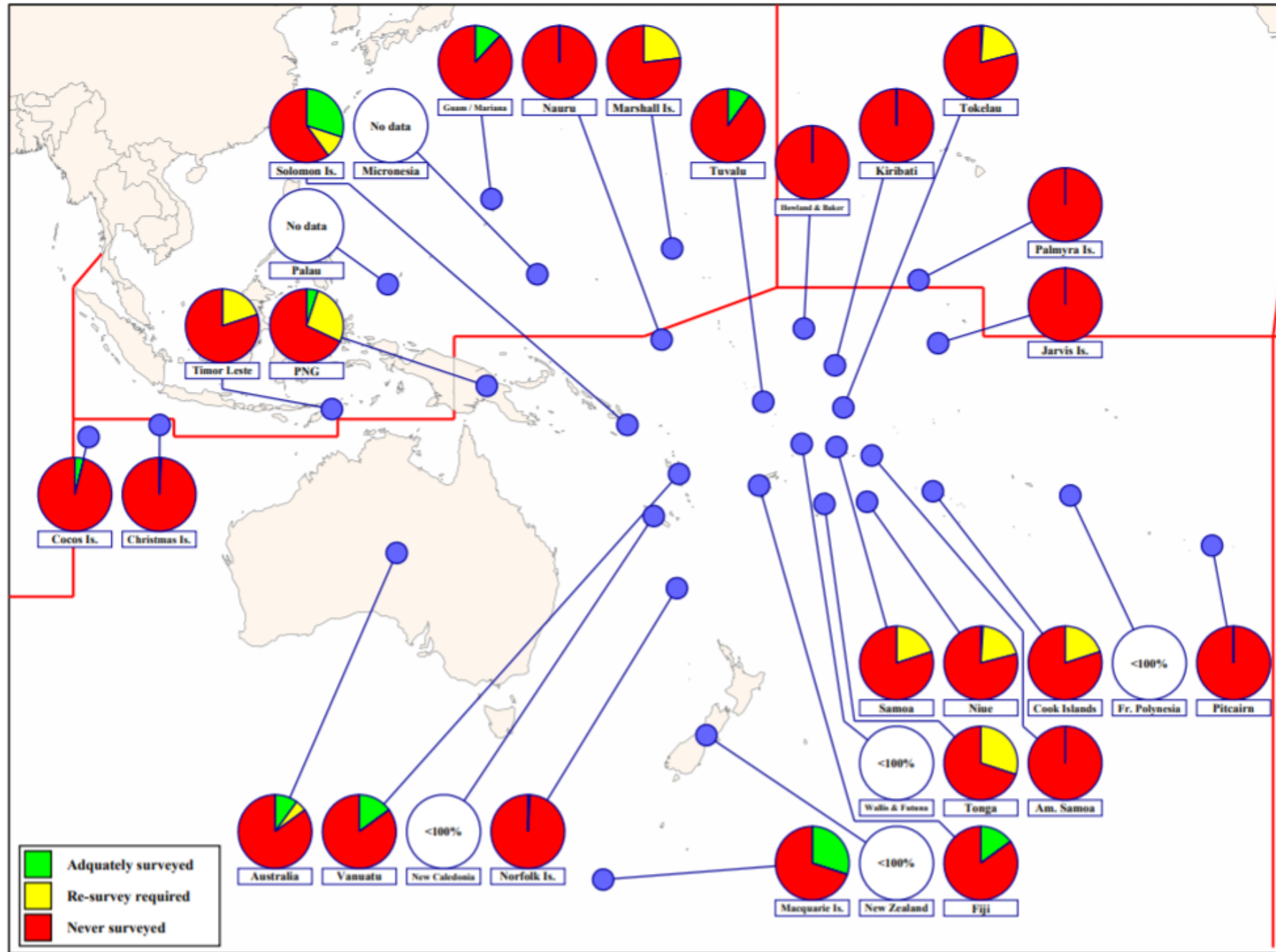
Country map	C55 Charting	C55 Surveying	C55 GMDSS	C55 Warnings	CATZOC	Boundary	RHC	Other GISs	Reset Token
All (simplified)	GB charts extcd.	GB charts orig.	Un-assessed	Antarctic					
UB1 simplified	UB2 simplified	UB3 simplified	UB4 simplified	UB5 simplified	UB6 simplified				

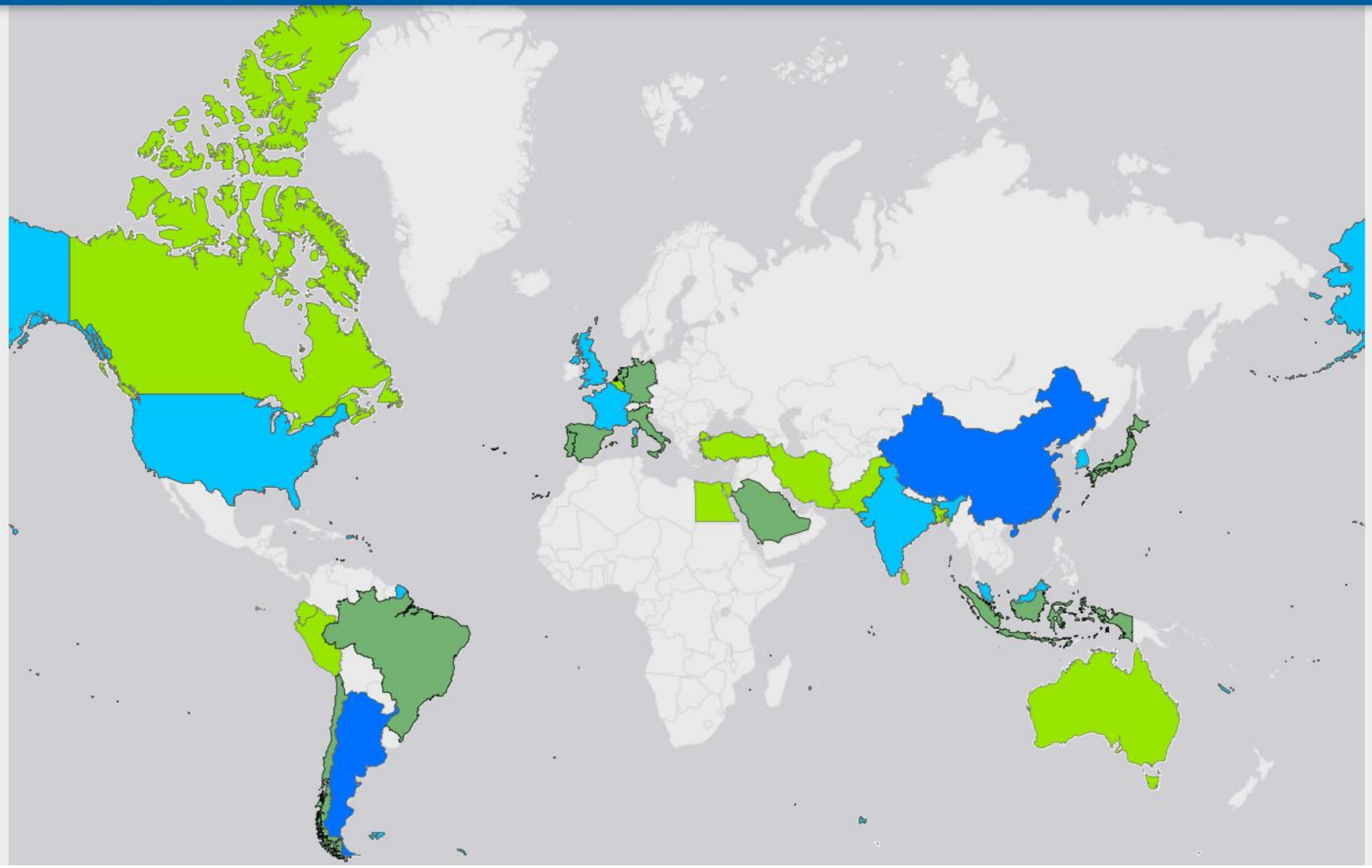
Set center Lat Lon Level

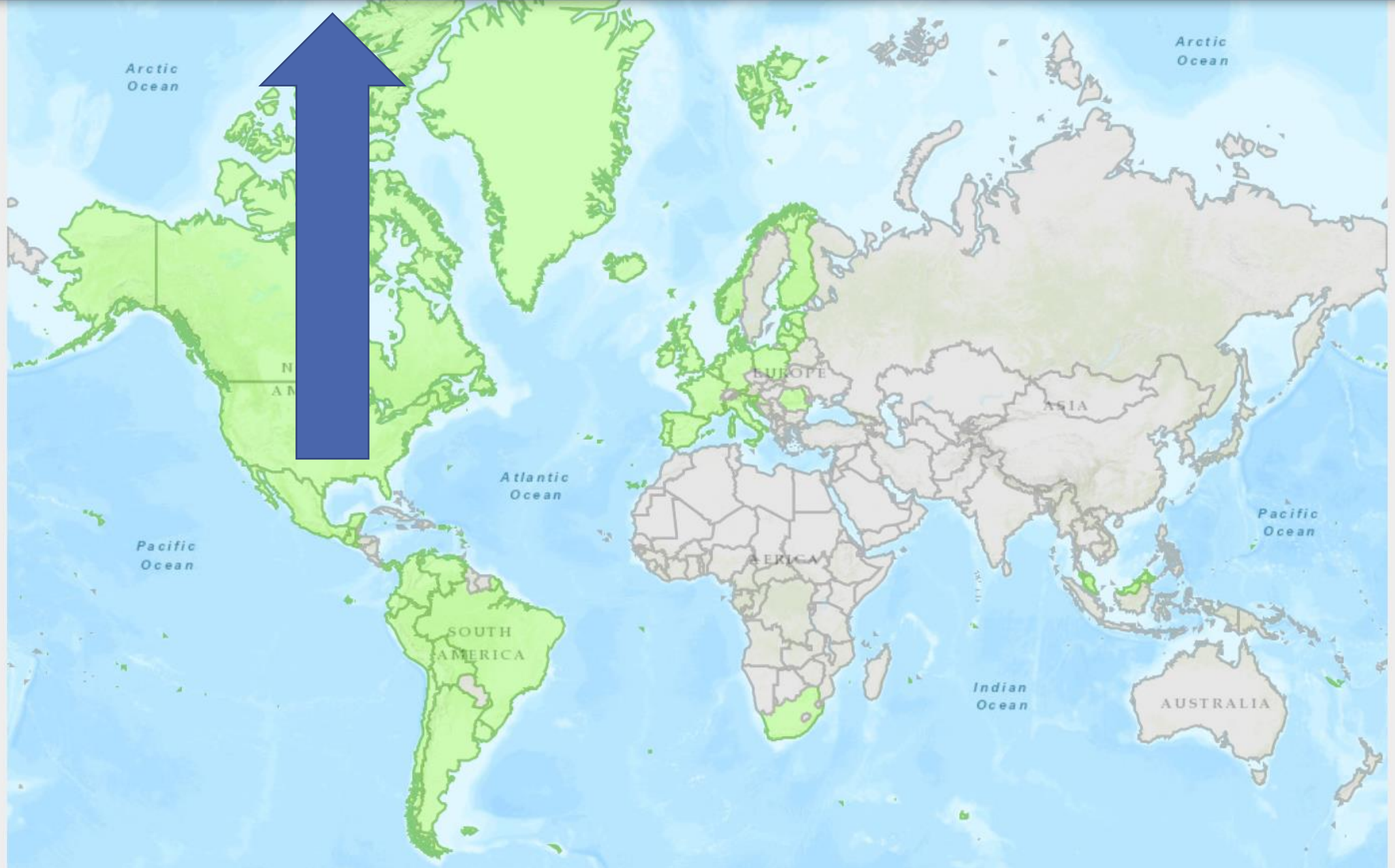


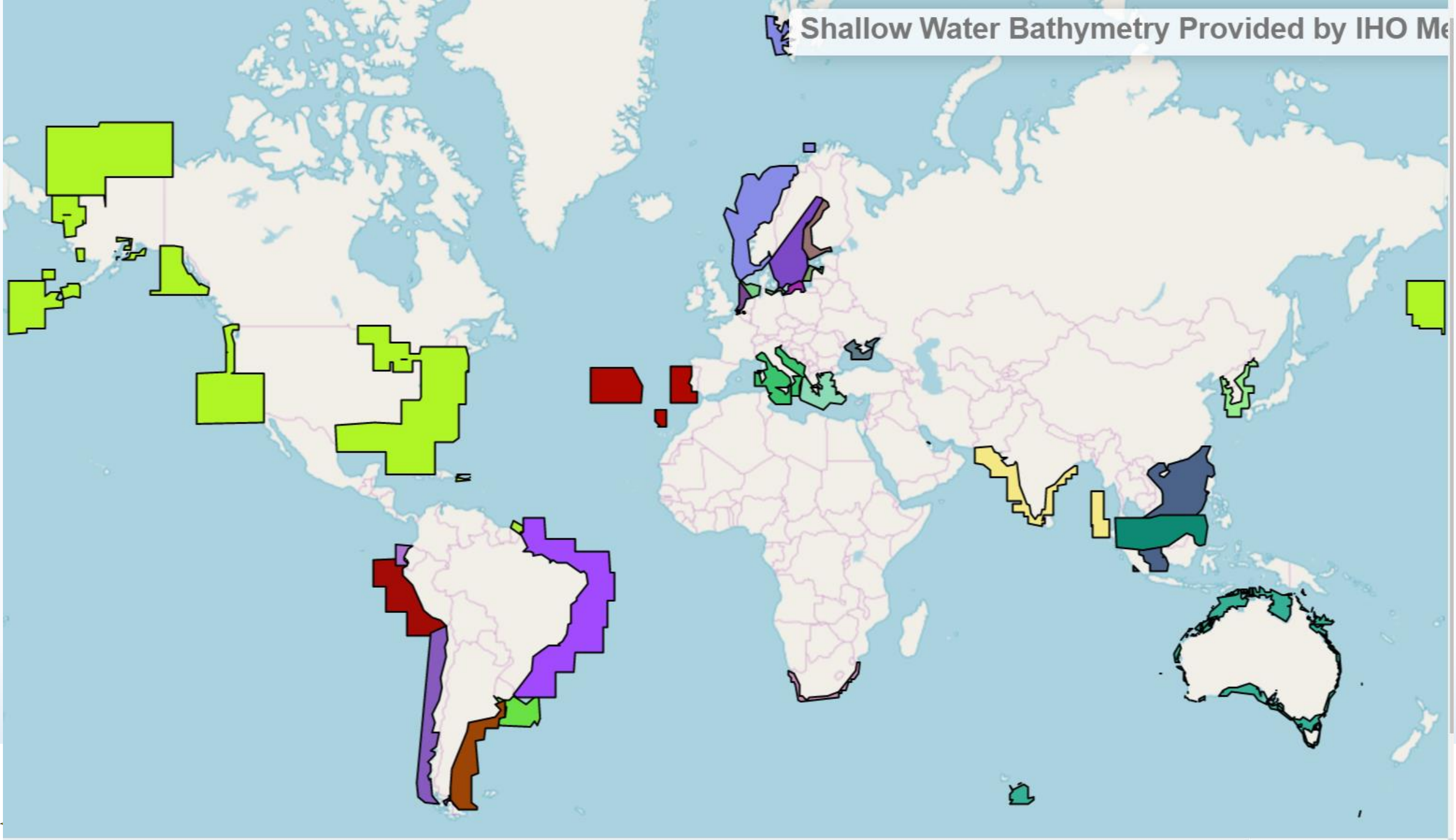
Charts displaying maritime boundaries are for **INTERNAL IHO SECRETARIAT USE ONLY**

SWPHC - Survey in deep water (>200 m) -











ENC Coverage Catalogue

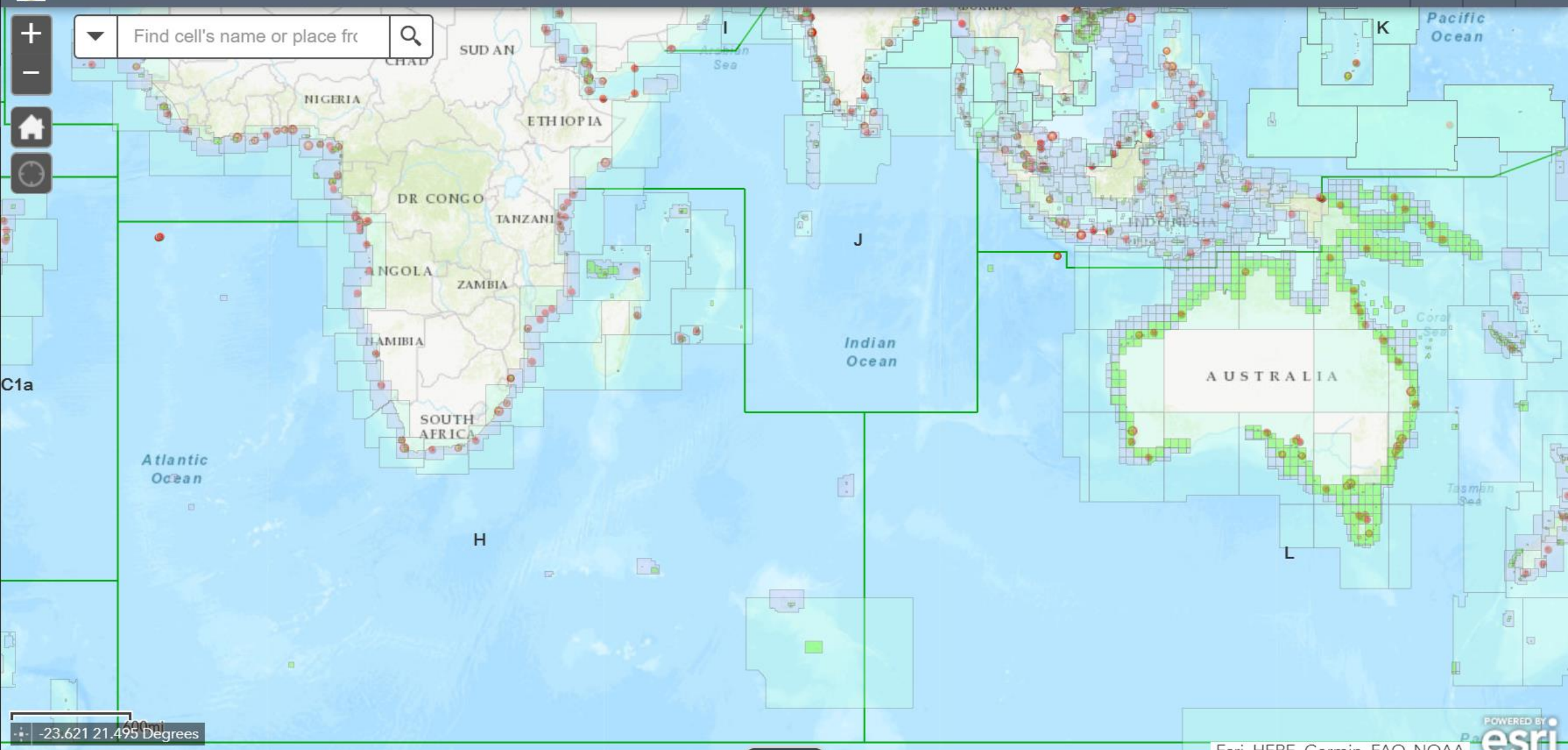
Please see base map disclaimer / Voir avertissement relatif aux fonds de cartes



Find cell's name or place fr



C1a



-23.621 21.495 Degrees

Esri, HERE, Garmin, FAO, NOAA



INTERNATIONAL Chart Web Catalogue

International Hydrographic Organization INT Chart Web Catalogue Service

MANUAL
DOWNLOAD



km | NM

CHART SEARCH

CHART LAYER

BASE MAP

Please see base map disclaimer / Voir avertissement relatif aux fonds de cartes



BASE Map

- WORLDMap
- BATHYMETRYMap

CHART Layers

- All Layers
- OverView
- General
- Coastal
- Approach
- Harbour
- Berthing

025° 58.19' E / 47° 27.29' N



Publicity and Outreach



Web page for movies

Several themes related to hydrography. Next the movie on MSDI



Other developments

Other developments:

- Replacement of the IHO document system to allow access also for Member States
- Ongoing upgrade and update of the IHO website
- IHO Capacity Building Management System



IHO Secretariat, here to help you!

www.iho.int

mustafa.iptes@iho.int

alberto.neves@iho.int

